

CERTIFICATE OF LOCATION OF GOVERNMENT CORNER

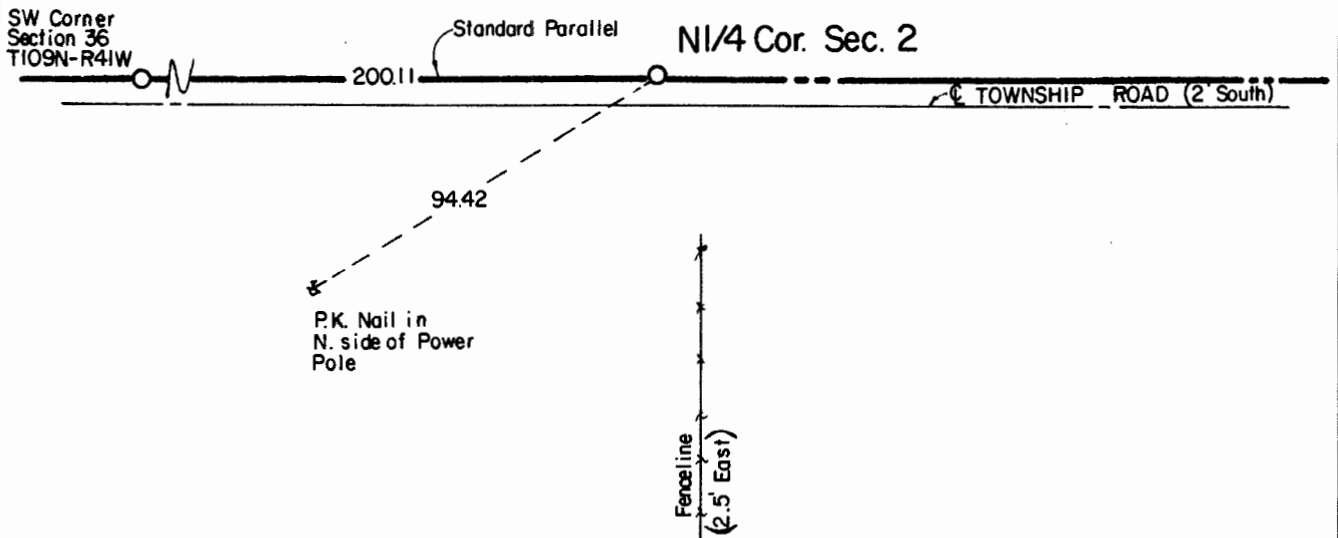
North Quarter Corner of Section **2** , Township **108** , Range **41** 5th P.M.

STATE OF MINNESOTA, County of Murray.

Statement: August 10, 1989 - Placed a Mn/DOT Cast Iron Monument on the Standard Parallel midway between the NE and NW Corners of Section 2.



SKETCH OF REFERENCE TIES



Statement of evidence relative to this corner location is on the back of page.

I hereby certify that this document and the data contained herein was prepared by me or under my direct supervision and that I am a duly Registered Land Surveyor under the laws of the State of Minnesota.

Duane A. Bonnema Nov 4, 1989
Duane A. Bonnema Date

Minnesota Registration No. 14895

OFFICE OF THE COUNTY RECORDER
COUNTY OF MURRAY NOV 15 1989

I hereby certify that this document was filed in the County Recorder's office at ___ M. on the ___ day of _____ A.D., 19__

County Recorder *James U. Johnson*

By _____, Deputy

DOCUMENT NO. _____

N Quarter Cor. Sec. 2 T108N-R41W

Statement:

1856 *This corner was not placed by the original government land office survey.*

Aug. 10, 1989 *Duane A. Bonnema, LS Reg. No. 14895, excavated a hole 1.5 feet North, 1.5 feet South, 3.5 feet East, and 3.5 feet West of the midpoint position. Natural ground was found at 2 feet below the road surface. The hole was dug to a depth of 4 1/2 feet below the road surface. No evidence of a Corner monument was found. A Minnesota Department of Transportation Cast Iron Monument was placed at a point midway between the Northeast and Northwest corners of Section 2 and on the standard parallel.*